

MIMI® Revolutionizes Dentistry

MIMI®, the Minimally Invasive Method of Implantation, has been applied for over 30 years. The MIMI® method is very patient-friendly, and it is becoming more and more integrated into dental care in dental offices. Nearly 20% of the implantations are performed according to MIMI®. About 200 000 implants are placed per year according to MIMI®. Horst Cox (HC) spoke to Dr. Armin Nedjat, a dentist and Implantology specialist. Dr. Armin Nedjat is also the Diplomat of the „Implantologie-Weltverband“ (International Association of Dental Implantology), the developer of the Champions®- implant system, and he offers continuing education courses about MIMI®.

HC: Dr. Nedjat, what does MIMI® mean and what is revolutionary about this implantation method?

AN: The MIMI® dental implantation is a relatively new technique involved in surgery that is virtually bloodless, allowing the patient to recuperate faster with less pain. In fact, no incisions and sutures are necessary in 80% of the cases. The treatment protocol has been reviewed: you have to wait for a maximum of eight weeks before you can fit the final prosthodontic restoration on the implants. In this way, good and affordable prostheses can be fitted very well. In addition, fixed prosthodontic restorations can also often be fitted. This is more comfortable because you do not have to remove the restoration and then refit it again. In this way, the „key-hole surgery“ MIMI® is especially suitable for elderly patients and for patients at a higher risk. As you mentioned, the MIMI® procedure has been applied for over 30 years and has been successful! In fact, fewer incisions mean fewer complications.

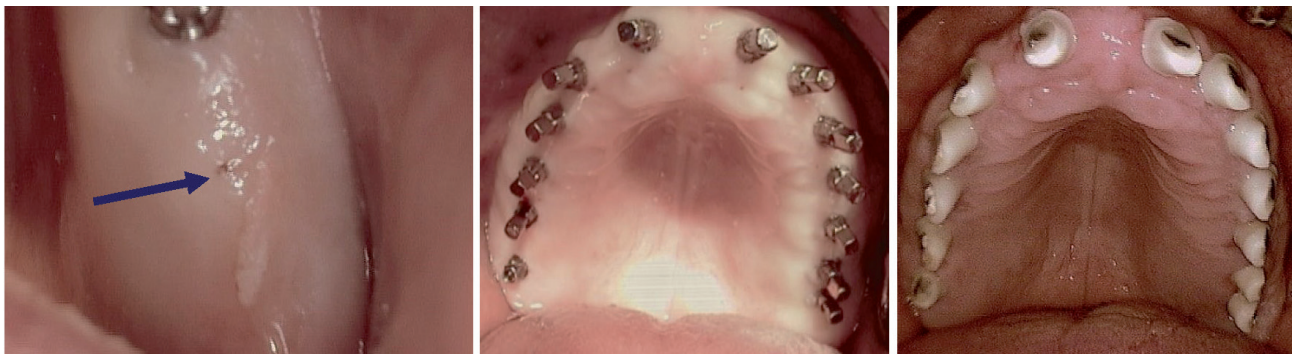


Fig. 1 -3: You almost don't see the drilled bone cavity, and the treatment is beneficial for many patients: MIMI®, the minimally invasive drilling (blue arrow), followed by an almost bloodless and pain-free implantation and the preparation of the cemented ceramic „Prep-Caps“.

In most cases, you can gently insert a larger-diameter Champion transgingivally in a small bone cavity, allowing bone to get condensed. Terms such as „keyhole surgery“ or „endoscopy“ are reflected in MIMI®.

HC: Is the implantation painful?

AN: You may just feel a slight pain when getting the injection for locally anesthetizing the area, which you may have experienced in other dental treatments as well. However, the implantation is completely pain-free. Most of all: after just one relatively short surgery session, many patients feel practically no postoperative pain since the soft and hard tissues are protected to the maximum. A day later, patients are usually able resume their daily activities without suffering from pain and swellings.



Fig. 4 - 6: The MIMI® procedure is particularly indicated for patients at high risk and/or elderly patients since nearly no complications during and after surgery are described. The certified MIMI clinics and dental offices are listed at: www.mimi-info.de

HC: Are there other advantages for patients?

AN: Yes, another advantage of this MIMI implant treatment is that it is more cost-efficient than the conventional one: since you often need just one session for the implantation, and because time-consuming and complicated bone augmentations are usually not necessary, the whole treatment costs are reduced by about 50% of the costs of a conventional implant and prosthodontic treatment. Surgeons or dentists can earn the same amount of money for a MIMI treatment as for a conventional one. Of course, they need to take perfect care of the patients, no matter whether they perform MIMI dental implantations or conventional ones. From a medical point of view, the most important aspect is the following: we have managed to develop the design of the one-piece Champions implant with no micro-gap at all and the two-piece Champions implant with a micro-gap of just about 0.5 μm . A larger micro-gap in conventional two-piece implants has been considered as the „trojanian horse“ for bacterial infections and as the main reason for implant failures. After a MIMI[®] treatment, good follow-up care and regular professional dental cleaning are recommended.

HC: Where can patients find information and advice on MIMI[®]?

AN: You can take a look at the patient homepage at www.mimi-info.de, on which more than 1000 certified MIMI[®] dental offices and clinics, for example in Germany, Austria, and Switzerland, are listed according to their zip code. Furthermore, high-quality master dental laboratories in Germany, where dental technicians are familiar with the Champions[®]- MIMI[®] procedure, will be listed on this site from this spring.



Approx. 100 000 MIMI[®]- implantations are performed per year in Germany.

